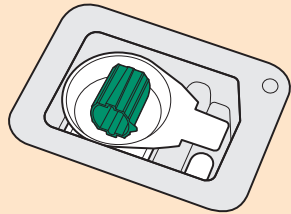
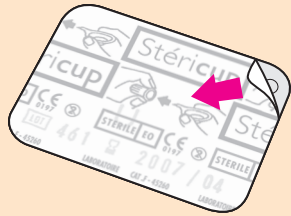


Take care to make sure your stericup  
doesn't get knocked or tipped over.



Exchange Supplies, 1 Great Western Industrial Centre,  
Dorchester, Dorset DT1 1RD  
Tel: 01305 262244 Fax: 01305 262255  
Email: [info@exchangesupplies.org](mailto:info@exchangesupplies.org)

**Stericup**

The stericup is manufactured for Apothicom.  
Distributed in the UK by Exchange Supplies.

**EXCHANGE  
SUPPLIES**

# using the stericup

STERILE EO

IN A RANGE  
OF COLOURS  
TO REDUCE  
ACCIDENTAL  
SHARING



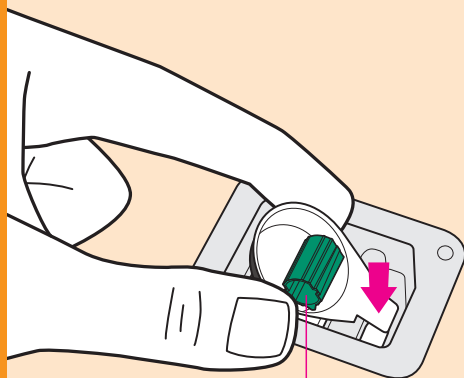
This leaflet explains how to use the stericup.

[exchangesupplies.org](http://exchangesupplies.org)

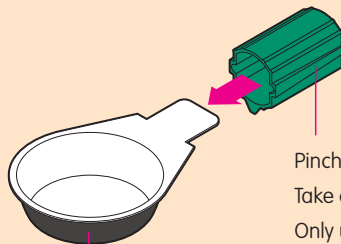
## Instructions on use

1. Wash your hands.
2. Carefully open the container by pulling the paper away from the corner with the dimple.
3. Take out the stericup by pressing gently on the metal tab to lift it up, so that you can get hold of it by the edges of the bowl. Remember your colour.
4. Tip out the handle and fit it firmly, taking care not to bend the metal.
5. Prepare your hit – being careful not to touch the inside of the stericup or the needle, drugs, citric/vitC and filter (use the needle to pick up the filter).
6. Use the smallest possible amount of citric or vitC.
7. Hold the handle at the sides to increase the grip of the handle on the stericup.
8. Dispose of everything carefully.  
Use a sharps bin for used needles.

**Stericups are made to be used once by one person.**  
Re-using them will increase the chances of infections (and the handle may become loose).



Tip out the handle.



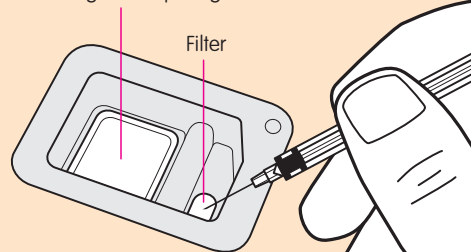
**Remember your colour.**  
**Never accidentally share again.**



**Do not touch  
the inside of  
the stericup**

Pinch handle (top and bottom) gently to fit.  
Take care not to bend the metal.  
Only use if you have a firm fit.  
To cook up, hold the sides  
of the handle so it stays tight.  
Re-use may loosen the handle.

Paper pad – use to stop  
bleeding after injecting.



Filter

**Because the stericup is lighter  
and smaller than a normal spoon  
take extra care so that it doesn't  
get knocked or tipped over.**

